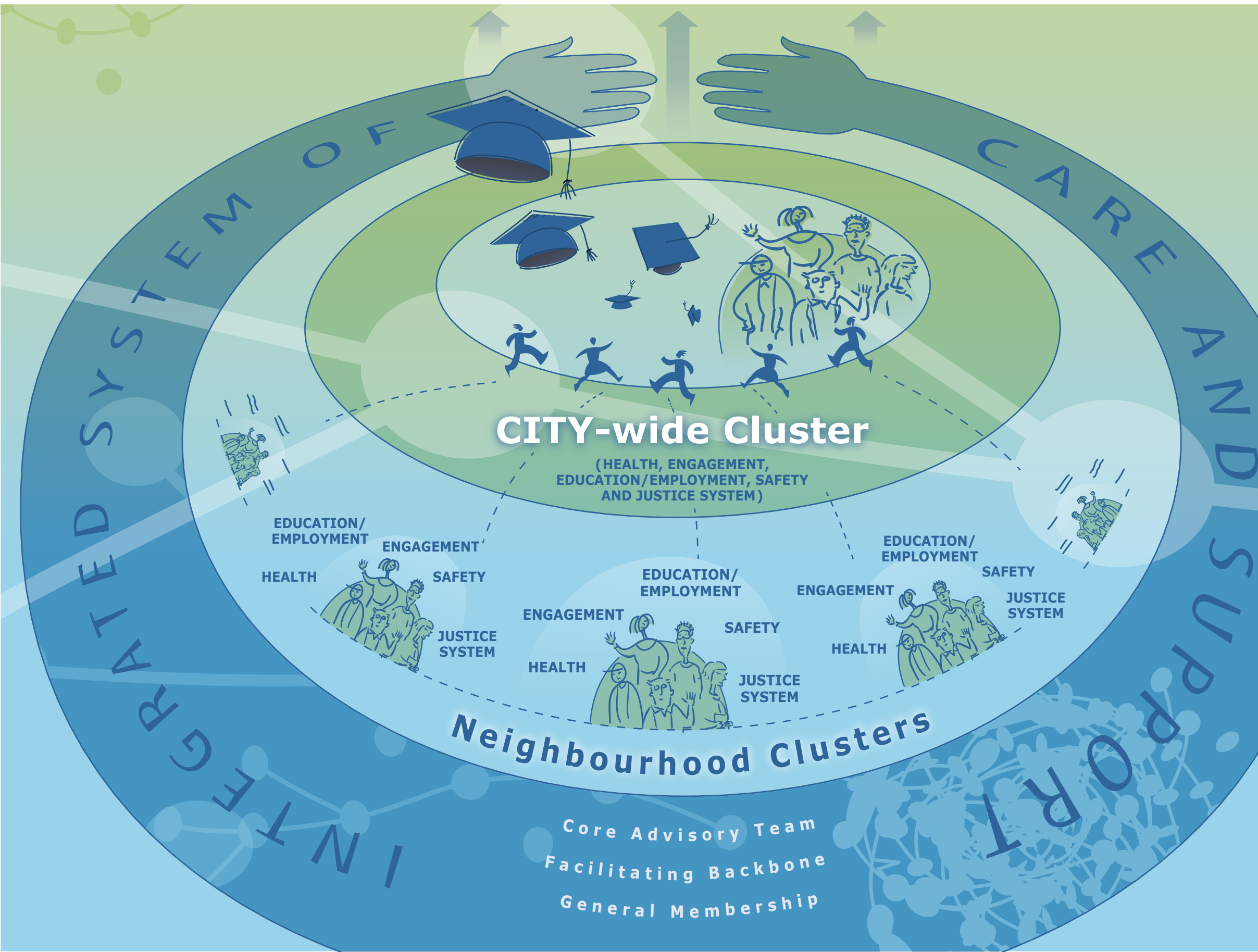


GOVERNANCE FRAMEWORK

Increased Graduation Rates of Racialized Youth



City-wide Cluster
 The City-wide Cluster develops system-level coordination and efficacy around our goal city-wide.

Neighbourhood Clusters
 Neighbourhood Clusters contain organizations that deliver programs and services in the neighbourhood. They implement the collective impact model to provide a consistent, coherent system of youth development and care that contributes to the overall project goal in each of the outcome areas.

Core Advisory Team (CAT)
 The Core Advisory Team facilitates project decisions. It supports, monitors and gives direction to the Facilitating Backbone (FBB) and steers the CITY initiative.

Facilitating Backbone (FBB)
 Paid staff are seconded from 3 to 6 organizations to ensure diversity of organizational expertise and knowledge is embedded in the work. One lead organization co-ordinates all staff to execute the workplan, as directed by the Core Advisory Team.

General Membership
 Members of CITY are those who are participating or interested in participating in CITY either currently or in the future as members of Neighbourhood Clusters, service delivery organizations at the neighbourhood level, members of the City-Wide Cluster, or those who are interested in learning more about participation in CITY specifically.